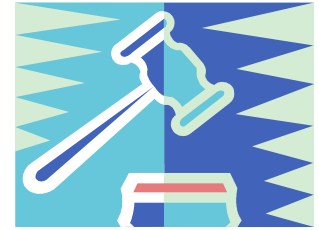




Louisiana Library Association  
Since 1925

# Chair's Column by Jeremy Landry



The wicked sisters, Katrina and Rita, have left our state. Thanks to the hard work and dedication of so many individuals, our affected libraries have begun picking up the pieces and resuming somewhat of a routine this semester. To everyone who was affected by the storms this season, let me say, "Welcome Home."

LLA Conference is just around the corner. We have several sessions of interest to our academic librarians. A special thanks to Jud Copeland, our vice-Chair/Chair Elect, for pulling together a fine array of programs.

The Academic Section has a number of sessions sharing "Pearls of Wisdom" through various forms of information literacy. Dr. Copeland will present "OpenCourseWare: A Global Strategy for Sharing Pearls of Wisdom," and Dr. Michelle Lynn McKnight will present "Medical Reference for Everyone" on

Wednesday, March 29.

The Academic Section is sponsoring poster sessions this year. Join our poster session presenters, Shelby Anfenson-Comeau and Megan Lowe, for a few minutes after lunch on Wednesday.

Thursday, March 30, kicks off with "What is the LOUISiana Digital Library?" presented by John Guillory, Gina Costello, and Jennifer Cooper. J.B. Hill and Dayne Sherman will present "Got Text?: Reaching Out to Students through Cell Phones." David Madden, author of the banned book *The Suicide's Wife*, will present "Your Banned Book May Be on My Must Read List: Intellectual Freedom in Louisiana's Libraries." Kristi Lobrano will be leading at the "Library Technology Showdown." Shelby Anfenson-Comeau and Alice Daugherty will present "Sharing Our Wisdom: Library Instruction for College Students."

The Academic Section Business Meeting is at 8:30 a.m. on Wednesday, March 29. We would like to bring back the joint meeting breakfast for LLA Academic Section and ACRL Louisiana to the LLA Conference next year. This is also an excellent opportunity for you to meet the new 2006-2007 officers, and learn how you can become more involved in both organizations. Please attend this meeting.

I hope to see everyone at LLA Conference this year. We have all been impacted by the storms of this year in ways great or small. Let us stand together with our colleagues and for our patrons.

**Editor's note:**

*Due to the hurricanes volume 25, issue 3, November 2005, will not be published.*

**Inside this issue:**

Chair's Corner	1
Library News	3
LLA 2006 Annual Conference Preliminary Program	7

## NOTES & TRACINGS

### Newsletter of the LLA Academic Section

[www.llaonline.org/fp/newsletters.php](http://www.llaonline.org/fp/newsletters.php)

#### Section Officers

##### Chair

Jeremy Landry

[el-jal@nicholls.edu](mailto:el-jal@nicholls.edu)

##### Vice Chair/Chair Elect

Jud Copeland

[jcopelan@lsue.edu](mailto:jcopelan@lsue.edu)

##### Secretary

Ashley Bonnette

[aeb@louisiana.edu](mailto:aeb@louisiana.edu)

##### Newsletter Editor

Susan Richard

[smr@louisiana.edu](mailto:smr@louisiana.edu)

#### Louisiana Library Association

421 South 4th Street  
Eunice, Louisiana 70535

877-550-7890 (toll free)

337-550-7890 (voice)

337-550-7846 (fax)

[office@llaonline.org](mailto:office@llaonline.org)

#### LLA Officers 2005-2006

Jackie Choate  
President

Beth Paskoff  
Vice-President/  
President-Elect

Terry Thibodeaux  
Past President

Mary Cosper LeBoeuf  
2nd Vice President

Betsy Miguez  
Secretary

Dolores Champagne  
Parliamentarian

Joy Lowe  
ALA Councilor

Vivian Solar  
*Louisiana Libraries* Editor

Beverly Laughlin  
Executive Director

# Library News

---

## LOUISIANA STATE UNIVERSITY

**Alice Daugherty** along with Christopher Cox, Julia Gelfand, S. G. Ranti Junus published "American Library Association (ALA) Annual Conference Report" in the November 8, 2005 issue of *Library Hi TechNews*.

She is Coordinator of the LLA Library User Education Interest Group for 2005-2006. She is Chair of ALA's New Members' Round Table Local Arrangements Committee for 2005-2006 and a member of their Governance Committee for 2005-2006. She is also a member of ALA's ACRL's Distance Learning Section Instruction Committee for 2005-2007.

**Tom Diamond** published *The Economic and Political Aspects of the Tobacco Industry: An Annotated Bibliography and Statistical Review, 1990-2004* (Scarecrow Press, 2005).

He is Co-Chair of ALA's Library Administration and Management Division, Measurement, Assessment and Evaluation Section's Using Measurement Data for Library Planning, Assessment and Communication Committee. He is also Chair of the Measurement, Assess-

ment and Evaluation Section Nominating Committee.

**Mitch Fontenot** published "Using Macromedia's Flash for a Library Research Tutorial" in the December 2005 issue of *Library Instruction Round Table News*.

**Elizabeth Pankl** and **Jenna Ryan** presented a paper entitled "Shhh! Librarians Blogging," at the Southwest Texas Regional Popular Culture Association/American Culture Association Conference in Albuquerque, NM on Feb. 11, 2006.

**Jennifer Cargill** has been appointed to a 3-year term on the Association of Research Libraries Membership Committee.

**Nancy Collier** was re-appointed as LITA Representative to the ALA Literacy Assembly, for 2005-2006.

**Paul Kelsey** has been appointed member of the Editorial Board of *Financial Counseling and Planning*, the official research journal of the Association for Financial Counseling and Planning Education beginning in 2006.

**Sigrid Kelsey** has been named Webmaster for the Louisiana Library Association.

**Lois Kuyper-Rushing** was elected to the LSU Faculty Senate Executive Council as a member-at-large for 2005-2006.

**Mark Martin** was appointed to the Society of American Archivists' 2007 Program Committee

**Carol Bell** earned her M.A. in Reading and Storytelling/Storytelling Concentration from East Tennessee State University in December, 2005.

"Special Delivery: A Showcase of LSU Libraries' Special Collections" will be on display in Hill Memorial Library on the LSU campus through April 3, 2006. It includes materials from all major collections, illustrating the great variety and range of documents, books, photographs, and artwork that the LSU Libraries preserve and make available to the public for research. On Sunday, April 2, the exhibition will be open for a special open house from 2 till 5 p.m. as part of the campus-wide "LSU GEMs Day." Regular viewing hours are 8 to 5 Monday through Friday and 9 till 1 on Saturdays. The galleries are also open Tuesday evenings until 8 when classes are in session.

---

## LOUISIANA STATE UNIVERSITY LAW CENTER

The LSU Law Library is pleased to announce the additions of Vicenç Feliú and Melanie Sims as Foreign, Comparative and International Law Librarian and Government Information Librarian, respectively.

Mr. Feliu, who is multi-lingual, comes to the Law Library after several years as a career officer in the United States Marine Corps and as a Special Agent in the Federal Bureau of Investigation. He has a BA from Cal State--Fullerton in Linguistics; a JD and a Masters of Intellectual Property, Commerce, and Technology from Franklin Pierce Law Center; and a MLIS from the University of Washington.

Ms. Sims received her undergraduate degree in Mass Communication and her MLIS from LSU. She rose

*(Continued on page 4)*

# Library News

---

## LOUISIANA STATE UNIVERSITY LAW CENTER *cont.*

*(Continued from page 3)*

through the ranks at LSU Libraries, with her most recent position there having been Assistant Reference Coordinator. Her work in both ALA (as chair of Cooperative Reference Service Committee) and with LLA (with the Minority Recruitment Interest Group and as chair of several LLA committees) is well-known.

---

## MCNEESE STATE UNIVERSITY

Over four months after Hurricane Rita, the McNeese Library re-opened to students, faculty, and the general public on Monday, February 6, 2006.

Since October 27, 2005, Library personnel had been temporarily housed in the Curriculum Materials Center and Kaufman Hall, both locations on the McNeese campus. While some services were still provided, most information access was limited to materials available from the Library's web site.

Damage to the building was primarily water-related, which resulted in mold and air quality issues. Most materials and equipment are in good condition. The 4<sup>th</sup> floor of the Library, housing the Government Documents collection, suffered the most significant damage.

**Anne Frohlich**, former Serials Librarian, has retired and now resides in Austin, TX.

**Debby Williamson**, former Reference Librarian, is now employed at the Leavenworth Public Library in Leavenworth, KS.

---

## NICHOLLS STATE UNIVERSITY

**Alice Saltzman** retired after 43 years of dedicated service. She served initially as a cataloging librarian, then, for many years, as Head of the Cataloging Department. Her professionalism and dedication serve as an example to all who have come in contact with her. The staff of Ellender Memorial Library wishes Ms. Saltzman a happy and very well-deserved retirement.

---

## TULANE UNIVERSITY

**Hortensia Calvo**, Doris Stone Director the Latin American Library, recently contributed a chapter, "Latin America and the Caribbean", for *The Blackwell Companion to the History of the Book*. This book was edited by Simon Eliot & Jonathan Rose, and will be published later this year by Blackwell Publishing.

**Ed Rock**, Humanities Reference Librarian, has been appointed to the ALA International Relations Roundtable International Librarians' Orientation/Mentoring Committee

for 2005-2006.

**Leon C. Miller**, Manuscripts Librarian, organized the session "The Curatorial Curse: Understanding, Recognizing, and Avoiding Conflicts Between Archival, Library, and Curatorial Methods" at the annual meeting of the Society of American Archivists, August 18, 2005, in New Orleans. The session included David Gracy from the UT-Austin School of Information, Michael Fox from the Minnesota Historical Society, and Sue Hodson from the Hunt-

ington Library. As part of the session, Miller presented the paper "The Allure of Wine and Cheese: Exhibits and the Dilettante Ethic." A survey of meeting participants ranked it among the highest-rated meeting programs. Miller was also the recipient of the 2004 Academy of Certified Archivists Distinguished Service Award.

**Stephen Fowlkes**, Reference Librarian & Bibliographer for Sociology, Social Work & Reference, has

*(Continued on page 5)*

# Library News

---

## TULANE UNIVERSITY *cont.*

(Continued from page 4)

completed a revision of his Cuban Studies Bibliography. Updated and considerably expanded (at 149 pages), this July 2005 bibliography is available in Tulane's Latin American Library and will soon also be available on the Web site of Tulane's Cuban and Caribbean Studies Institute.

Several librarians presented a poster session at the ALA Annual Conference in Chicago, June, 2005. The session was entitled "Moving to an Off-site Storage Facility: An Effective Communication Strategy Before, During, and After the Move." Presenters at the session were: **Cecilia D. Stafford**, **Donna Capelle Cook**, **Andrew Corrigan**, **Felice Maciejewski**, and **Andrew Damico** (now at Rice University). Task force members who are unable to attend the conference, but were involved in the move and preparation of the poster session are **Eleanor Elder**, **Shane Robichaux**, and **Jeannette Thompson**.

---

## UNIVERSITY OF LOUISIANA AT LAFAYETTE

In the wake of Hurricanes Katrina and Rita, Dupré Library at UL Lafayette has shortened its hours to participate in a campus-wide effort to save utilities. The library is currently open 7:30 a.m.-10:00 p.m., Monday through Thursday; 7:30 a.m.-12:30 p.m. on Friday; 10:00 a.m.-2:00 p.m. on Saturday; and 2:00 p.m.-9:00 p.m. on Sunday. All computers, printers and monitors are shut down at the end of each work day. Employees are working longer days with shorter lunch hours Monday through Thursday to complete the 40-hour work week. The library will return to its regular hours during the months of April and November and extend the hours through final exams.

**Jean Kiesel**, Louisiana Room Librarian, was awarded a grant from the American Library Association's Public Programs Office and Nextbook to conduct a reading and discussion series "Let's Talk About It: Jewish Literature" in partnership with Lafayette Public Library during Fall 2005. A second grant from the Louisiana Endowment for the Humanities allowed the libraries to purchase copies of the five selected books for participants to use. Copies of those titles are now available for distribution to public libraries around the state.

**Sheryl Curry**, Head of Internet Access Services; **Ashley Bonnette**, BI/Distance Learning Librarian; and **Helen Thompson**, UL Lafayette English Department, recently received a \$15,500 student technology grant to acquire RefWorks, a web-based bibliographic management service distributed by Cambridge Scientific Abstracts (CSA). RefWorks enables direct import of search results from many of Dupré Library's databases into an individual account created by the user. The program automatically creates correctly formatted bibliographies in all major styles, and it supports document or manuscript preparation in MS Word. The grant also funded the affiliated RefShare application, which enables users working on a group project to post and access information on a central Web page.

**Danny Gillane**, Development and Gifts Librarian, and **Betsy Miguez**, General Reference Librarian, collaborated with Dr. Jean T. Kreamer and Dave Spizale of KRVS radio station on an audio-visual PowerPoint presentation explaining the mural "The History of Medicine in Louisiana." The mural is mounted on the first floor of Dupré Library.

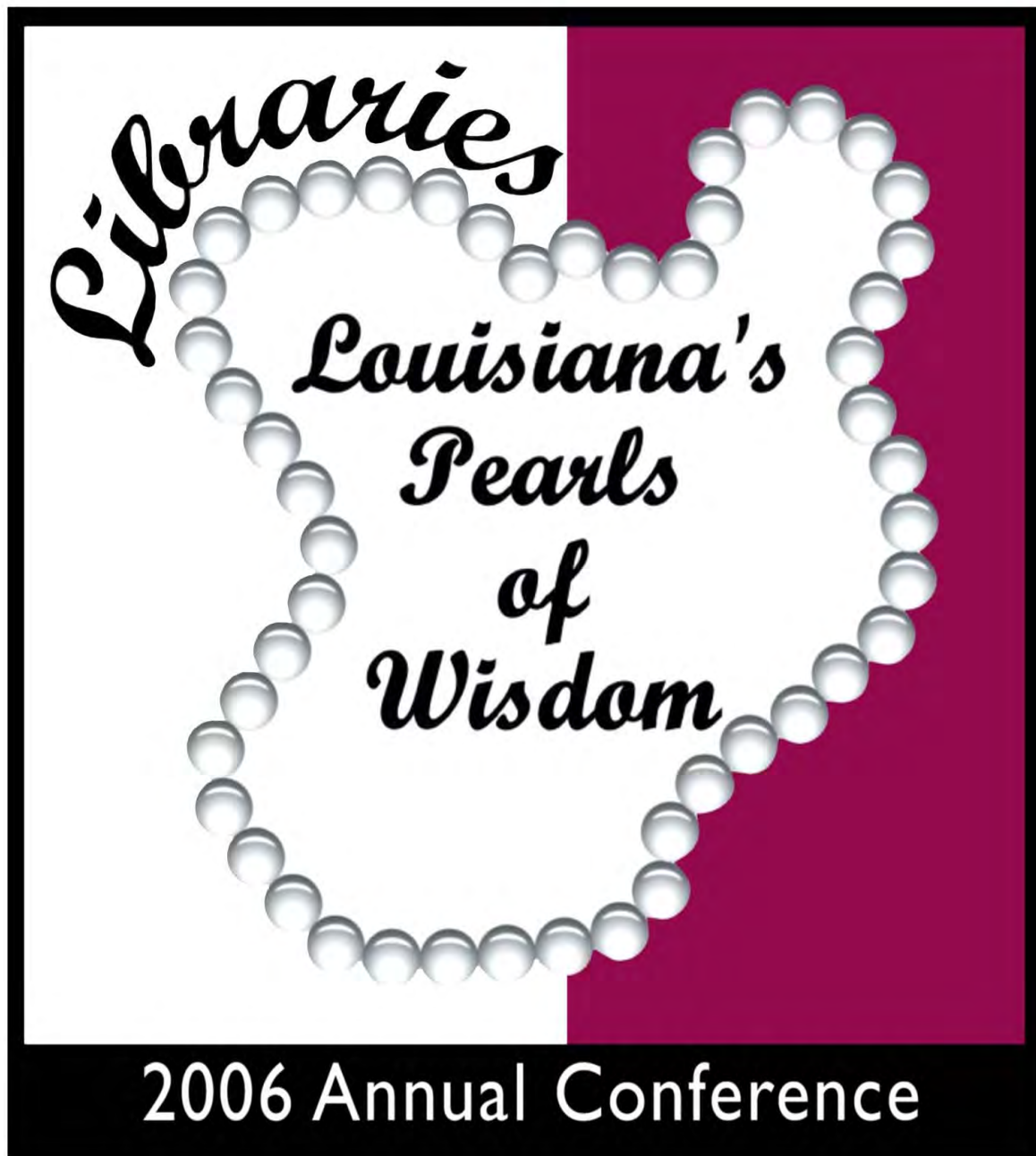
**Denise Goetting**, Head of Cataloging, and **Betsy Miguez**, presented papers concerning changing perspectives of females in children's literature at the Midwest Popular Culture Association's Annual Conference in St. Louis, MO, and the Midwest Modern Language Association's Annual Conference in Milwaukee, WI, in October and November, 2005.

**Betsy Miguez** is serving a two-year appointment to RUSA's Reference Sources Committee. The committee met in San Antonio during ALA's Midwinter Meeting in January, 2006, to select the Outstanding Reference Sources published in 2005.

**Bruce Turner**, Head of Special Collections, collaborated with two other archivists, Dr. Florent Hardy and Dr. Deborah J. Clifton, on an article entitled "Les Archives des Francophones de la Louisiane" which was published in *Archives*, volume 36, issue 2 (2004-2005). The journal is published by Association des Archivistes du Québec.







**LOUISIANA LIBRARY ASSOCIATION**

**March 28 - 30, 2006**

**Cajundome Convention Center**

**Lafayette, Louisiana**

**Louisiana Library Association Annual Conference**  
Cajundome Convention Center ~ March 28 - March 30, 2006

<p><b>Registration</b> (Best Western Hotel) Pre-registrants only Tuesday, March 28, 3 – 5 p.m. (Convention Center) Wednesday, March 29 7:00 a.m. – 4:00 p.m. Thursday, March 30 7:00 a.m. – 2:00 p.m.</p>	<p><b>Exhibits</b> (Convention Center) Wednesday, March 29 9:00 a.m. – 4:00 p.m. Thursday, March 30 9:00 a.m. – 4:00 p.m.</p>
<p><b>Internet Café</b> (Convention Center) Wednesday, March 29 8:00 a.m. – 5:00 p.m. Thursday, March 30 8:00 a.m. – 4:00 p.m.</p>	<p><b>Swap 'n Shop</b> (Convention Center) Wednesday, March 29 9:00 a.m. – 4:00 p.m. Thursday, March 30 9:00 a.m. – 4:00 p.m.</p>

**Tuesday, March 28, 2006**

**¿No Comprende? Spanish Health Information Resources for English Speaking Librarians**

Pre-conference registration \$10 LLA members, \$15 non-members

Dupré Library, Room 141, UL Lafayette, 302 E. St. Mary Blvd.  
Tuesday, 8:00 a.m. – 12:00 noon.

Do you have a growing Latino population in your community? Do you need to find health information in Spanish fast but don't know where to look? This 4-hour hands-on class will cover resources for learning basic, library, medical, and Internet Spanish vocabulary. You will also learn to evaluate and identify health websites in Spanish to which you can direct your patrons. Four hours of continuing education credit will be awarded by the Medical Library Association. Speaker: Karen Vargas, Consumer Health Coordinator, NN/LM SCR. Subject Specialists

**Gems of Lafayette Parish: LASL 2006 School Libraries Tour**

Pre-conference registration \$10 LLA members, \$15 non-members

Limited to 35 attendees

Cajundome Convention Center to board bus, 444 Cajundome Blvd.  
Tuesday, 8:30 a.m. – 12:30 p.m.

Join the tour of Lafayette school libraries scattered across its many bayous like a string of pearls linking the lovers of literature, ending with a sampling of Cajun culinary delights!!! Schools to visit: Ovey Comeaux High School, Our Lady of Fatima School, J. W. James Elementary School, and N. P. Moss Middle School.  
Organizer: Pat Hanisee, Lafayette Parish School System. LASL

**Grant Writing – A Process**

Pre-conference registration \$20 LLA members, \$30 non-members

Lafayette Public Library, Meeting Room, 301 West Congress St.  
Tuesday, 8:30 a.m. – 12:00 noon, 1:30 – 4:20 p.m.

The process of grant writing for libraries and nonprofits of all sizes and types will be described and discussed, from identifying a need and possible partners to the preparation and submission of the grant application in its sections and attachments, and through administering the grant received. Moderator: Robert Bremer, Louisiana Tech. Speakers: Robert Bradley, LSU; Pam Wall, Louisiana Office of Community Development; and Yasmin Welch, Education and Counseling Center, Lafayette. LaSSAL; Library Managers Interest Group

**Connecting Boys with Books**

Pre-conference registration \$25 LLA members, \$37.50 non-members

Lafayette Economic Development Authority, 211 E. Devalcourt St.  
Tuesday, 1:00 – 4:00 p.m.

Practical, proven, and sometimes off-beat suggestions on how to turn boys into life-long readers. Speaker: Michael Sullivan, Director, Weeks Public Library, Greenland, NH. Public

**LLA Executive Board Meeting**

Best Western Hotel Acadiana, 1801 W. Pinhook Rd.  
Tuesday, 5:00 – 7:00 p.m.

**Wednesday, March 29, 2006**

**LASL Executive Board Meeting**

Wednesday, 8:00 – 8:50 a.m.

**LaSSAL Business Meeting**

Wednesday, 8:00 – 8:50 a.m.

**Louisiana Libraries Editorial Board Meeting**

Wednesday, 8:00 – 8:50 a.m.

**Louisiana Young Readers' Choice Award Program 2007 for Grades 3-5**

Wednesday, 8:00 – 9:20 a.m.

Short, snappy book talks and ways to implement the Louisiana Young Readers' Choice Award Program will be presented by members of the committee. Come find out the winning title for 2006, and hear about the terrific titles on the 2007 ballot. LASL; State Library of Louisiana

**Academic Section Business Meeting**

Wednesday, 8:30 – 9:20 a.m.

**LLA's Finances: What You Need to Know**

Wednesday, 8:30 – 9:20 a.m.

This is the annual session sponsored by LLA to introduce incoming officers to LLA's financial terms and guidelines. Speaker: Terry Thibodeaux, LLA Past President

**Exhibits Open**

Wednesday, 9:00 a.m.

**Strategic Thinking and Planning (That the Rest of Us Can Understand!)**

Wednesday, 9:00 – 10:50 a.m.

The old adage "People do not plan to fail, they simply fail to plan" is true. This program will provide you with a basic understanding of how to effectively and efficiently plan ahead so as to minimize the chances of failure. Speaker: Robert Bradley, LSU. LaSSAL

**Your Theme Issue: Do You Have What It Takes To Be a Guest Editor?**

Wednesday, 9:00 – 9:50 a.m.

Editorial panel discussion. Presiding: Vivian Solar, *Louisiana Libraries* Editor.

**Louisiana Young Readers' Choice Award Program 2007 for Grades 6-8**

Wednesday, 9:30 – 10:50 a.m.

Short, snappy book talks and ways to implement the Louisiana Young Readers' Choice Award Program will be presented by members of the committee. Come find out the winning title for 2006, and hear about the terrific titles on the 2007 ballot. LASL; State Library of Louisiana

**Subject Specialists Business Meeting**

Wednesday, 9:30 – 10:20 a.m.

**OpenCourseWare: A Global Strategy for Sharing "Pearls of Wisdom"**

Wednesday, 9:30 – 10:20 a.m.

The goal of OpenCourseWare is to make university course materials available on the Web, free of charge, to any user, anywhere in the world. This presentation will focus on how OCW works and on certain copyright issues related to OCW. Speaker: Jud Copeland, LSUE. Academic

**Library Managers Interest Group Meeting**

Wednesday, 10:00 – 10:50 a.m.

## **Wednesday, March 29, 2006 (cont.)**

### **Secret Lives of Databases**

Wednesday, 10:00 – 10:50 a.m.

A look at some of the often neglected and rarely glimpsed power features of WebFeat and selected databases in their natural habitat. Speaker: Riley Bordelon, State Library of Louisiana. Public

### **Medical Reference for Everyone**

Wednesday, 10:30 – 11:20 a.m.

Drawing on her 21 years of experience as a hospital librarian (and brief experiences as a public and school librarian), Dr. McKnight will present practical ways to find and empower your patrons to find current and reliable health information from top online and print sources. Speaker: Michelynn McKnight, LSU School of Library & Information Science. Academic; Reference Interest Group

### **Minority Recruitment & Professional Concerns Interest Group Meeting**

Wednesday, 10:30 – 11:20 a.m.

### **AASL: Your Professional Organization and You**

Wednesday, 11:00 – 11:50 a.m.

What your professional organization is doing for your benefit and how you can make connections nationally. Speaker: J. Linda Williams, President of AASL. LASL

### **Fail to Plan, Plan to Fail: How to Prevent Costly Technology Mistakes and Maximize Your Technology Dollars**

Wednesday, 11:00 a.m. – 12:20 p.m.

Four speakers discuss the technology planning process and share their experiences. Speakers: Ralph Boe, LOUIS; Helen Curol, Calcasieu Parish School Board; Caroline LeBlanc, State Library of Louisiana; and Jim Pelton, Shreve Memorial Library. Subject Specialists; Public; Automation & Technology Interest Group

### **LASL Author Luncheon with Judith Byron Schachner**

Wednesday, 12:00 noon – 1:30 p.m.

(Ticketed event by pre-registration only)

Judith Byron Schachner, author of *Skippyjon Jones* and *I Know an Old Lady Who Swallowed a Pie*. LASL

### **Poster Sessions for Academic Section**

Wednesday, 1:00 – 1:50 p.m.

Spend 10 or 15 minutes with each of our poster session presenters. This year's topics are: "Making Less into More: Creating an Overall Plan for Library Instruction" and "But Why Do We Gotta? Teaching About Plagiarism and Its Importance." Speakers: Shelby Anfenson-Comeau, LSUE, and Megan Lowe, UL Monroe. Academic

### **Programming Publicity Done Right: The World Is Your 'Erster'**

Wednesday, 1:00 – 1:50 p.m.

Finding ways of reaching an increasingly distracted public audience for your programs is an on-going challenge. The RELIC programs of the Louisiana Endowment for the Humanities and the Caddo Parish Library will share ideas with the audience about how to outshine other gems in their communities if competition is a threat. Presiding: James A. Segreto, RELIC Library Programs. Speaker: Betty Cannon, Captain Shreve Branch, Caddo Parish Library. Public; LEH

### **The State of the State Library of Louisiana**

Wednesday, 1:00 – 1:50 p.m.

What is happening at the State Library of Louisiana, including the Louisiana Book Festival. Speaker: Rebecca Hamilton, State Library of Louisiana. Public

### **Supervising Student Workers: How to Handle Problem Situations**

Wednesday, 1:00 – 2:20 p.m.

A panel discussion on appropriate disciplinary strategies for resolving problems that arise with student workers, with time for questions and comments from the audience. Speakers: Lynell Buckley, Charlotte Lee, and Mary Shively, Louisiana Tech. LaSSAL

### **LASL General Session and Business Meeting**

Wednesday, 1:30 – 3:20 p.m.

### **Free Legal Resources on the Web**

Wednesday, 2:00 – 3:20 p.m.

Come learn about free, reliable legal resources that can be used by you and your patrons. Speaker: Catherine Lemann, Law Library of Louisiana. Subject Specialists

### **The Leader as Trailblazer**

Wednesday, 2:00 – 3:20 p.m.

A review of the characteristics of effective leaders. Speaker: Dr. Paula Carson, College of Business, UL Lafayette. Academic

### **Performer Showcase**

Wednesday, 2:00 – 3:50 p.m.

Storytellers and other performers are the gems who enrich your school and public library programs for children. Come and enjoy a glittering sample of Louisiana's performing artists. Presiding: Gale Criswell, State Library of Louisiana. Public; Storytelling Interest Group

### **Prime Time Family Reading Time: Tune In**

Wednesday, 2:00 – 2:50 p.m.

Prime Time Family Reading Time is an award winning family literacy model that has expanded nationally with the support of the American Library Association and the National Endowment for the Humanities. This presentation analyzes the impact on parents, children, libraries, and schools. The demand for bilingual Prime Time materials has been met, and these will be shared, along with the four series in circulation. Learn how to bring this program developed by the Louisiana Endowment for the Humanities to your library. Presiding: Faye Flanagan, LEH. Speakers: Oneal Isaac and Dana Eness, LEH. Public; LEH

### **Vendor Pearls: Technology Showcase**

Wednesday, 2:30 – 3:50 p.m.

Vendors will speak about their products in 10-minute intervals. LaSSAL

### **1st General Session and Awards Ceremony:**

#### **"Celebrating Louisiana's Pearls"**

Wednesday, 4:00 – 5:30 p.m.

Join us as we present our award winners. Stay afterwards for the "Diamonds and Pearls Anniversary Celebration," where we will honor our award winners and celebrate LLA's 80th anniversary and the LSU School of Library and Information Science's 75th anniversary. Everyone is invited to enjoy cake and something bubbly. Presiding: Jackie Choate, LLA President, and Beth Paskoff, LLA 1st Vice President. LLA; LSU School of Library & Information Science

### **Serials Interest Group: "Meet, Greet, and Eat!"**

Wednesday, 7:00 p.m.

Please join us at one of Lafayette's favorite restaurants, Blue Dog Cafe, 1211 W. Pinhook Road, for an evening of good food, great conversation, and relaxation. Organizer: Sherry T. Broussard, UL Lafayette

### **Past Presidents Dinner**

Wednesday evening by invitation only.

### **Trustees Reception**

Wednesday evening by invitation only.

---

## **Thursday, March 30, 2006**

### **GODORT/Lexis-Nexis Academic Solutions Breakfast & Business Meeting**

Thursday, 8:00 – 9:20 a.m.

(Ticketed event by pre-registration only)

Documents to the People...Music to the People: Presentation on the use of DVD+Internet as a platform for documenting culture, including the project *From La-La to Zydeco*, which has been distributed statewide to libraries and cultural organizations. The collaborative role of universities and government agencies involved in the preservation of local musical cultures will also be discussed. Speakers: Robert Willey, College of Music, UL Lafayette, and Sandy Himel, UL Lafayette. GODORT



## **Thursday, March 30, 2006 (cont.)**

### **Fantastic Fantasy**

Thursday, 8:00 – 8:50 a.m.

Since the debut of Harry Potter, fantasy fiction has become one of the top selling and most popular literary genres of readers everywhere. This PowerPoint presentation reviews fantasy literature for grades 3-12 and showcases the speaker's favorites. Speaker: Jan McGee, West Monroe High School. LASL

### **Let's Read! Survey of Favorite Books for Children Ages 3-4**

Thursday, 8:00 – 8:50 a.m.

Review of a survey of 12,000 Louisiana public library staff, early childcare staff, family home care providers, and Pre-K teachers to ascertain favorite read aloud books for children ages 3-4. Speaker: Rose Anne St. Romain, State Library of Louisiana. Public

### **LOUISiana Digital Library: Who, What, Where, How?**

Thursday, 8:00 – 8:50 a.m.

The LOUISiana Digital Library – who is involved in it, what is it, where is its home, how do you partner with it? Speakers: John Guillory, LOUIS: Gina Costello, LSU Special Collections; and Jennifer Cooper, UL Lafayette Center for Cultural and Eco-Tourism. Academic

### **Casting Your Pearls...Marketing Your Library**

Thursday, 8:30 – 9:00 a.m.

Speaker: Doris Lively, Grant Parish Library. Public; Outreach Services/Bookmobile Interest Group

### **Automation & Technology Interest Group Meeting**

Thursday, 9:00 – 9:50 a.m.

### **Best in Children's Books in 2005**

Thursday, 9:00 – 10:20 a.m.

Book reviews, connections to GLEs, websites, and other information presented by librarians of Lincoln Parish. LASL

### **Got Text? Reaching Out to Students through Cell Phones**

Thursday, 9:00 – 9:50 a.m.

In the spring of 2005, Sims Memorial Library at Southeastern Louisiana University initiated a "Text A Librarian" service that enables Southeastern students, faculty, and staff to receive reference assistance from librarians by using the text message feature of their cell phones. This presentation discusses Southeastern's experience and the opportunities and challenges of providing reference service via text messaging. Speakers: J B Hill and Dayne Sherman, Southeastern. Academic

### **Modern Oral Histories of Louisiana Families: An Inside View of Cajun Comedy**

Thursday, 9:00 – 10:20 a.m.

Preview of a documentary being released today featuring behind-the-scene interviews with several Cajun storytellers. The Cajun humorists will give wonderful quips and quotes about family stories and how family histories and cultural references are passed from generation to generation. Presenters: Jim Currie, the Cajun Comedy Show; Kent Gonsoulin, Jonathan Perry, and A.J. Smith, Cajun humorists. Educational Associates

### **The Virtual Depository: The Evolution of Depositories from Print to Online Government Information**

Thursday, 9:30 – 10:20 a.m.

Panel discussion on the challenges and opportunities presented to depositories as government information becomes wholly digital. Panelists: Michelle Pope, Loyola Law, and Lora Amsberryaugier, UNO. GODORT; Library Managers Interest Group

### **Building Community One Hello at a Time**

Thursday, 10:00 – 11:50 a.m.

Libraries help build healthy communities, and healthy communities support libraries. Learn how to connect successfully with all of the people in your community. Topics include the basics of building civilization and community, reaching out to strangers, increasing your comfort level in new situations, staying relevant in a changing society, creating cooperative projects, and increasing financial support. Speaker: Pat Wagner, Pattern Research, Inc., Denver, CO. Public

### **SOLINET Users Group Meeting**

Thursday, 10:00 – 10:50 a.m.

Most of you probably identify SOLINET with OCLC or with its continuing education offerings. However, did you know that SOLINET members enjoy discounted databases and library products, group licensing, consulting services, free preservation information and referral, and so forth? For up-to-date information on SOLINET's programs and offerings and how they can aid your library, plan to attend this session. All librarians, members and non-members, are welcome to attend. Speaker: Ron Leonard, SOLINET

### **Your Banned Book May Be on My Must Read List: Intellectual Freedom in Louisiana's Libraries**

Thursday, 10:00 – 11:20 a.m.

David Madden, author of the banned book *The Suicide's Wife*, will talk about censorship and the libraries' pivotal role in protecting citizen's intellectual freedom. Discussion will follow. Speaker: Dr. David Madden, LSU. Academic; Library User Education Interest Group

### **Best Books for Young Adults**

Thursday, 10:30 – 11:50 a.m.

The best books for young adults published in the past year will be presented. Speaker: Dr. Joy Lowe, Retired. LASL

### **Public and Trustees Luncheon: "Pearls on the Half Shell"**

Thursday, 12:00 noon – 1:30 p.m.

(Ticketed event by pre-registration only)

Speaker: Marcelle Bienvenu. Trustees Section Business Meeting to be held during the luncheon. Presiding: Mark A. Tullos. Public; Trustees

### **How to Find Good, Reliable Government Information about the Gulf Coast**

Thursday, 12:30 – 1:20 p.m.

In the wake of Hurricanes Katrina and Rita much attention will be focused on finding information about the Gulf coast. Two government Web sites, the USGS National Wetlands Research Center and the National Biological Information Infrastructure, provide a wealth of information about the geography, wildlife habitats, threats, functions, and value of the wetlands of the Gulf coast. Speaker: Judith Haydel, IAP World Services, Inc. at the National Wetlands Research Center. GODORT; Public

### **Teachers of Library Science Interest Group Meeting**

Thursday, 1:00 – 1:50 p.m.

### **Library Technology Showdown!**

Thursday, 1:00 – 2:20 p.m.

Several libraries will show off and tell about their successful library electronic technology (hardware and/or software). Every showoff will get a prize and the best showoff (determined by the audience) will win the grand prize. Presiding: Kristi Lobrano, Bossier Parish Community College and Loretta Gharst, Calcasieu Parish Library. Speakers: Sheryl Curry, UL Lafayette; Helen Thompson, UL Lafayette; Carla Clark, LSU Shreveport; and others. Academic; Automation & Technology Interest Group

### **Video & Media Interest Group Meeting**

Thursday, 1:00 – 2:20 p.m.

### **Government 101: Online Resources All Libraries Can Use**

Thursday, 1:30 – 2:20 p.m.

Highlighting access to government information using FirstGov and other government information sources. Speakers: Lori Smith, Southeastern, and Rob Bremer, Louisiana Tech. GODORT; Library Managers Interest Group

### **Public Section Business Meeting**

Thursday, 1:30 – 2:00 p.m.

### **Resources: Bridging the Gap in the Comprehensive Curriculum**

Thursday, 1:30 – 2:20 p.m.

Electronic resources that go hand-in-hand with Comprehensive Curriculum activities are available to teachers! Speaker: Margaret Henderson, Region VIII TLTC Facilitator. LASL

(Continued on page 10)

## Thursday, March 30, 2006 (cont.)

### If Change Is Good, Why Am I Not Having Any Fun!

Thursday, 2:00 – 3:50 p.m.

How to sell change effectively, know characteristics of people comfortable with change, how adults can learn new things faster, how to create a cheat sheet to aid learning, and how to identify behaviors that are symptoms of stress. Speaker: Pat Wagner, Pattern Research, Inc., Denver, CO. Public

### Sharing Our Wisdom: Library Instruction for College Students

Thursday, 2:30 – 3:50 p.m.

Panel discussion on teaching strategies for library instruction to college students, with opportunity for attendees to contribute. Panelists: Shelby Anfenson-Comeau, LSUE, and Alice Daugherty, LSU. Academic

### Whirlwinds in Libraries: Louisiana Libraries, Katrina, Rita, and the Future

Thursday, 2:30 – 3:50 p.m.

Damage assessment, recovery, and immediate needs for school, public, academic, and special libraries in Louisiana. Presiding: Margie Thomas, LSU School of Library & Information Science. LASL: Preservation Interest Group

### 2<sup>nd</sup> General Session and Business Meeting

Thursday, 4:00 – 5:30 p.m.

### LLA Cash Bar

Thursday, 6:00 – 7:00 p.m.

This is your chance to relax, mingle, and enjoy a cocktail prior to the Book Dinner.

### LLA Book Dinner: "Pearls from Pearl"

Thursday 7:00 – 9:00 p.m.

(Ticketed event by pre-registration only)

Speaker: Nancy Pearl, award-winning author of *Book Lust* and *More Book Lust*.

## More Speakers:

**Karen Vargas** – As the Consumer Health Coordinator of the National Network of Libraries of Medicine, South Central Region, Karen Vargas is responsible for coordinating, promoting, and implementing consumer health information programs for the Region. She teaches a variety of classes on consumer health issues for librarians, consumers, and health professionals. Karen's background is in public libraries. She managed two urban branches of the Houston Public Library system, where she emphasized library outreach to the community, working with community organizations such as the Center for AIDS and Covenant House Texas. Karen participated in a fellowship program at the Library of Congress in 1996, and received her Masters of Science in Library Science from the University of North Texas in 1997.

**Michael Sullivan** – Sullivan (MLS, Simmons, 1999) is the author of *Connecting Boys With Books: What Libraries Can Do* (ALA Editions, 2003), and *The Fundamentals of Children's Services* (ALA Editions, 2005). He has spoken widely on the topic of boys and reading. He has been a Children's Librarian and Library Director in public libraries for more than fifteen years, and is currently Director of the Weeks Public Library in Greenland, NH.

He has written several articles for *Public Libraries*, including "Giving Them What They Want in Small Public Libraries" (May/June 2000) and "The Fragile Future of Public Libraries" (September/October 2003), as well as "Why Johnny Won't Read" for *School Library Journal* (August 2004).

In 2005 he was profiled in *Library Journal's* "Movers and Shakers" edition for his work in promoting reading to boys. He is a traveling storyteller and a chess instructor, and once worked at the Boston Museum of Sciences as part of its overnight "Camp-In" instructional program for children. His chess program at the Parlin Memorial Library in Everett, MA was honored with an Outstanding Achievement Award in the U.S. Conference of Mayors City Livability Award competition in 2001. He is a former President of the New Hampshire Library Association and was the 1998 New Hampshire Librarian of the Year.

**Pat Wagner** – Wagner and her husband, Leif Smith, own Pattern Research, Inc., a 30-year-old research and training business in Denver. Since 1978, Wagner has worked with libraries and library organizations in over 40 states. She has conducted administrative and leadership training institutes as well as numerous programs for library associations, state libraries and systems.

Wagner is the LAMA/ALA regional institute trainer for project management as well as a SOLINET trainer. In addition, she works onsite with library directors, staff members, trustees and volunteers on personnel, management, marketing and leadership issues.

Wagner has a B.A. in Liberal Arts with an emphasis in performance and written communication from Loretto Heights College. She is a regular contributor to library publications. Last year, she published an essay in *From Outreach to Equity: Innovative Models of Library Policy and Practice* (Office for Literacy and Outreach Services, Robin Osborne, Editor, ALA Editions) and was a contributor in 2005 to *Conflict Management for Libraries: Strategies for a Positive, Productive Workplace* (Jack G. Montgomery and Eleanor I. Cook, ALA Editions). She is known for her practical and good-humored programs.

**Dr. David Madden** – Born in Knoxville, TN in 1933, David Madden graduated from the University of Tennessee, served in the Army, earned an M.A. at San Francisco State, and attended Yale Drama School on a John Golden Fellowship. Madden served as Writer-in-residence at LSU from 1968 to 1992, Director of the Creative Writing Program 1992-1994, and Founding Director of the U.S. Civil War Center 1993-1999. A prolific writer, Madden has published 9 novels, 2 collections of short stories, and multitude of works of literary criticism, essays, poems, plays and textbooks. He has received numerous awards for his work; several novels have been nominated for the Pulitzer Prize.

## Featured Speakers:

**Judith Byron Schachner**, a popular author and illustrator of eight children's books, will be the featured speaker for the LASL Author Luncheon. In 1995 she wrote and illustrated her first picture book, *Willy and Mary*. Publications continue to flow from pen and brush: *Mr. Emerson's Cook*, *I Know an Old Lady Who Swallowed a Pie*, *The Granny-man*, *How the Cat Swallowed Thunder*, *Skippyjon Jones* and her latest, *Skippyjones in the DogHouse*.

**Marcelle R. Bienvenu** will be the featured speaker for the Public and Trustees Sections Luncheon. Marcelle Bienvenu grew up in a household centered around food, cooking, family, and writing. This hearty mix made for great material for her now famous first cookbook, *Who's Your Mama, Are You Catholic, and Can You Make a Roux?* This former restaurant owner teamed up in the '90s with Chef Emeril Lagasse to co-author with him four more culinary classics: *Louisiana Real and Rustic*, *Emeril's TV Dinners*, *Every Day's a Party*, and *Emeril's Creole Christmas*. Bienvenu also writes for several Louisiana publications, including *Louisiana Life*, and her weekly syndicated column, "Cooking Creole," is a favorite with New Orleans' *Times-Picayune* readers.

**Nancy Pearl** – Pearl, America's best known reader's advisory librarian is the former Director of the Washington Center for the Book at the Seattle Public Library. Often described as "the rock star among readers," Pearl can recommend a book for every mood, moment or reason. She is the creator of the internationally recognized program, "If All of Seattle Read the Same Book."

Pearl, a longtime freelance contributor to *Booklist* magazine, gained notoriety both as an author and as the model for the controversial "shushing" librarian action figure. She has two best-sellers to her credit: *Book Lust* and the recent *More Book Lust*. She is also the author of several professional books for librarians, including *Now Read This*. In 2004 Pearl was honored as the recipient of the "Women's National Book Award" for her contribution to the world of books.

Conference goers will be treated to "pearls" from Pearl at the Book Dinner set for Thursday, March 30.