



Louisiana Library Association
Since 1925

NOTES & TRACINGS

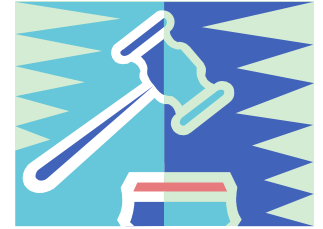
Chair's Column by Jeremy Landry

Thank you to everyone who planned, presented, attended, and in any way contributed to making the LLA Conference a success this year. We had some very informative presentations and several insightful guest speakers.

A very special thanks is due to all of the state's librarians and library staff. Everyone was impacted in some way from very minor inconveniences to nearly insurmountable challenges that they are still dealing with today. Thank you for stepping up to the challenges in your personal and professional lives this year. Libraries have proven to be Pearls of Wisdom and Pearls of Hope to local, displaced, and slowly returning patron populations. Al-

though there is much still to be done, thank you for all that you've accomplished thus far.

ALA is just around the corner in New Orleans. Pre-conference sessions begin on Thursday, June 24, 2006. The conference sessions run from Saturday, June 24, and through Tuesday, June 27. Beginning Saturday, June 24, LLA will host a booth on the vendor floor. We need volunteers to fill two-hour slots at this booth. The slots are 9:00am - 11:00am, 11:00am - 1:00pm, 1:00pm - 3:00pm, and 3:00pm - 5:00pm Saturday through Monday. On Tuesday the slots are 9:00am - 11:00am, 11:00am - 1:00pm, 1:00pm - 3:00pm. If you would like to fill a slot, please email Beverly Laughlin,



LLA Executive Director, with the date and time slot you can work at: office@llaonline.org. This is an excellent opportunity to say thank you for all the recent support shown to Louisiana's libraries.

Please welcome Jud Copeland of LSU-E as he assumes the Chair next year, Carla Clark of LSU-S as our Vice-Chair/Chair-Elect, and Anthony Fonseca as Secretary. I hope to see all of you in New Orleans for the ALA Conference and next year in Baton Rouge, March 6-8, 2007, for the LLA Conference.

Editor's note: Thanks to Betsy Miguez, UL Lafayette, LLA Conference Publicity Co-Chair, for designing the conference photo collage.

Inside this issue:

Chair's Corner	1
Library News	3
Section News	5
Conference Photos	6

NOTES & TRACINGS

Newsletter of the LLA Academic Section

www.llaonline.org/fp/newsletters.php

Section Officers

Chair

Jeremy Landry

el-jal@nicholls.edu

Vice Chair/Chair Elect

Jud Copeland

jcopelan@lsue.edu

Secretary

Ashley Bonnette

aeb@louisiana.edu.edu

Newsletter Editor

Susan Richard

smr@louisiana.edu

Louisiana Library Association

421 South 4th Street
Eunice, Louisiana 70535

877-550-7890 (toll free)

337-550-7890 (voice)

337-550-7846 (fax)

office@llaonline.org

LLA Officers 2005-2006

Jackie Choate
President

Beth Paskoff
Vice-President/
President-Elect

Terry Thibodeaux
Past President

Mary Cosper LeBoeuf
2nd Vice President

Betsy Miguez
Secretary

Dolores Champagne
Parliamentarian

Joy Lowe
ALA Councilor

Vivian Solar
Louisiana Libraries Editor

Beverly Laughlin
Executive Director

Library News

LOUISIANA STATE UNIVERSITY

John Anderson, Map Librarian and Director of the Cartographic Information Center, has been involved in supporting hurricane recovery efforts as a Program Coordinator for the Hurricane Katrina GIS Clearinghouse. For a description of Cartographic Information Center's support see: <http://www.katrina.lsu.edu/research.asp#cartographic>

Anderson worked with the Library of Congress Geography & Map Division Staff on the American Memory Project's online exhibit of World War Two Situation Maps. He supplied the text for the overview of the collection, <http://memory.loc.gov/ammem/collections/maps/wwii/about.html>, and the text describing the activity in each daily map in the Battle of the Bulge Interactive Essay, <http://memory.loc.gov/ammem/collections/maps/wwii/essay1.html>.

Alice Daugherty, Information Literacy Librarian, published "Motivating Online Information Literacy Students" in the Winter issue of *Academic Exchange Quarterly*, and presented with **Shelby Anfenson-Comeau**, LSUE, "Sharing Our Wisdom: Library Instruction for College Students" at the Louisiana Library Association Annual Conference in Lafayette.

Sigrid Kelsey, Electronic Reference Services and Web Development Coordinator and Art Librarian, was a panelist on a "How to Get Published" forum for LSU Library School Class, LIS 7005 in February. She gave a presentation on mentoring for the AMPS Apprenticeship & Mentoring Program for Students, cosponsored by NRG Energy, Inc. and the Pointe Coupee Community Enrichment Fund in March.

Kelsey has been appointed column editor for "What's New in Li-

brary Products and Services," a regular column in *Louisiana Libraries*.

Natalie Palermo, Systems Librarian, presented with **Cathy Sicard**, LOUIS, "Unicorn Policies: Extreme Makeover (LOUIS Edition)," at the SirsiDynix SuperConference held March 5-8, 2006 in Nashville. She was elected to the Unicorn Users Group International (UUGI) Executive Committee as Program Officer.

Jennifer Cargill, Dean, was appointed to the *American Libraries* Advisory Committee beginning after the 2006 annual conference for a two-year term.

Linda Griffin, Head of Cataloging, has been appointed to the NASIG Membership Development Committee, the NASIG Library School Outreach Task Force, and the ALA Council Committee on Education.

Lois Kuyper-Rushing, Head of the Carter Music Resources Center, was elected to serve as Secretary to the LSU Faculty Senate Executive Council.

Mark Martin, Assistant Curator for Image Resources for Special Collections, was appointed to the Society of American Archivists' 2007 Program Committee.

Hans Rasmussen has accepted the position of Special Collections Cataloger at Hill Memorial Library. He comes to LSU from the University of Southern Mississippi where he was Catalog Librarian. He holds an MLS from the University of Texas, an MA in history from LSU, and a BA in history from McNeese.

"A Short History of Prints -- A Selection of Historical Works of Graphic Art" is on display at the Hill Memorial Library. This exhibition of prints from the fifteenth to the

twenty-first century presents examples showing the evolution of the medium of printmaking, from German woodcuts to experimental techniques pioneered by American printmakers after World War II.

The exhibition displays leaves from the Nuremberg *Chronicle* and Sebastian Brant's *Stultifera Navis* ("Ship of Fools"), both printed in the 15th century, as well as books illustrated by Picasso, Matisse, and Jim Dine. Other artists represented include George Cruikshank, Gustave Doré, Edward Lear, John James Audubon, Karl Bodmer, James O'Neill Whistler, and Caroline Durieux.

This exhibition was curated by students enrolled during the Spring 2006 Semester in Dr. Darius Spieth's Art 4401, "The History of Prints," in collaboration with Special Collections staff. It will be on display in Hill Memorial Library through September 1.

The LSU Libraries has been awarded a \$400,000 grant from the Louisiana Board of Regents for the project, "Louisiana Historical Newspapers: Preservation and Access." LSU's partners in this project are the libraries at McNeese State University and Louisiana State University Shreveport. **Faye Phillips** and **Elaine Smyth** are the Project Investigators. The LSU Libraries creates archival microfilm of current Louisiana newspapers, which in 2004 included 94 titles and totaled 69,870 feet of microfilm, thus providing a vital information resource for the study of Louisiana and its history.

The funds requested in this proposal will provide the equipment necessary to 1) continue archival

(Continued on page 4)

Library News

(Continued from page 3)

microfilming work of the Louisiana Newspaper Project; 2) develop enhanced Internet access to Louisiana newspapers via the Louisiana Newspaper Access Program (LaNeAP); and 3) enhance the ability of the LSU Libraries and its partners, McNeese and LSU-S, to provide on-demand, user-driven digital and physical access to existing microfilm of newspapers through the use of both digital and standard microfilm reading technology.

MCNEESE STATE UNIVERSITY

Janet Woolman, former Reference Librarian, has assumed duties as Serials Librarian. **Jessica Hutchings**, Reference Librarian, is now serving as Head of Reference Services. Jerome Cummings, Interlibrary Loan Librarian, has left McNeese to accept a position with the Lafayette Parish Library system.

The Archives and Special Collections Department has created an electronic encyclopedia of information about McNeese State University. It is available online at <http://library.mcneese.edu/depts/archive/Encyclo/encyclo.htm>.

The effects of Hurricane Rita are still being felt by the university and southwest Louisiana community. While the McNeese Library reopened on February 6, several buildings on campus remain closed due to structural damage or mold.

TULANE UNIVERSITY

Leon C. Miller, Manuscripts Librarian, has been elected to the Council of the Society of American Archivists.

UNIVERSITY OF LOUISIANA AT LAFAYETTE

Beate Kukainis, Head of Technical Services, is one of the PIs for a BORSF grant entitled "Traditional Access to Tomorrow's Americas," which will fund \$65,000 worth of Latin American and Caribbean studies materials for Dupré Library.

Bruce Turner, Head of Special Collections, and **Jean Kiesel**, Louisiana Room Librarian, served as co-chairs of local arrangements for the Southern Archives Conference held in Lafayette in April.

Many UL Lafayette librarians were involved in the Louisiana Library Association Conference, which was held in Lafayette in March. **Denise Goetting**, Head of Cataloging, chaired the conference and **Susan Richard**, Head of Reference, served as co-chair. Subcommittee co-chairs included **Jean Kiesel**, and **Betsy Miguez**, Reference Librarian. **Lance Chance**, Systems Librarian, was the conference photographer. **Sherry T.**

Broussard, Special Projects Librarian, hosted an evening outing for the Serials Interest Group. **Sandy Himel**, Government Documents Librarian, and **Sherry Curry**, Head of Internet Access, participated in program presentations, and **Beate Kukainis** presented the Culver Award as chair of that committee.

Denise Goetting has been elected Second Vice President of LLA for 2006-07.

UNIVERSITY OF LOUISIANA AT MONROE

In October 2005, **Lila Jefferson** joined the library faculty as Acquisitions Librarian. She was formerly Assistant Coordinator for the Big Country Library System (Abilene, Texas). She is a graduate of Northeast Louisiana University and Louisiana State University.

Section News

Louisiana Library Association Annual Conference Academic Section Business Meeting Minutes Wednesday, March 29, 2006, 8:30 a.m.-9:20 a.m.

Jeremy Landry, chair of the LLA Academic Section, opened the Business Meeting at 8:35 a.m. on Wednesday, March 29 in the Jazz Room of the Lafayette Cajundome Convention Center. He began with introductions of current and incoming officers attending: Jud Copeland, Vice-President and incoming President, and Ashley Bonnette, current secretary. Other incoming officers introduced were Carla Clark, incoming Vice President.

Items of discussion:

1. Jeremy commented on the skipped Notes & Tracings issue (Fall 2005) due to various damages caused by Hurricanes Katrina and Rita. There is currently a new issue online at the LLA web site pages.
2. Jeremy inquired as to whether everyone in the section is on the LLA listserve.
3. Beginning with this present 2006 LLA Conference, the Academic Section will once again sponsor 10 minute Poster Sessions. These sessions are perfect for those who prefer a shorter presentation time rather than a full 45 minute presentation.
4. Jeremy raised the matter of reinstating the joint ACRL and LLA/Academic Section Breakfast/Business Meeting for next year's annual conference in Baton Rouge. Vote was unanimous to reinstate the hot breakfast (over the Continental) with a corporate sponsorship from LOUIS or SIRSI. Jeremy assured that the time slot would not conflict with the GODORT breakfast, but it may conflict with the LaSSAL breakfast. The time slot was discussed with a 7:30am time suggested by Carla Clark (LSU-S) and agreed upon by all.
5. Jeremy noted that most of the Academic programs would be held in the Jazz Room. He then went on to review the Conference programs sponsored by the Academic Section.
6. Carla Clark announced that she would be coordinating the programs and sessions for next year's conference in Baton Rouge so everyone should start getting their ideas into a proposal format.
7. Jean Kiesel suggested that the section consider putting on a pre-conference workshop for next conference; the section gets to keep the proceeds from registration.

The meeting was adjourned at 9:00 a.m.

Ashley Bonnette
Academic Section, Secretary

Officers Elected

2006-2007 Academic Section Officers

Chair – Jud Copeland
Louisiana State University at Eunice

Vice Chair/Chair-Elect - Carla Clark
Louisiana State University at Shreveport

Secretary - Tony Fonseca
Nicholls State University





*LLA Conference 2006
Libraries: Louisiana's Pearls of Wisdom*

